



SAFETY FIRST

Safe transportation tips

- * Bring wastes in original or hand-labeled containers with caps and lids fully tightened or secured. **Never mix hazardous wastes together.**
- * Place waste containers in sturdy boxes and place newspaper or cardboard between them. Wrap leaking containers in newspaper and place in a clear plastic bag.
- * Transport wastes as far from passengers as possible. Keep your vehicle well ventilated. Secure the load to prevent shifting during transport.
- * Do not eat, drink, or smoke while packing, transporting, or dropping off hazardous waste.
- * At the collection site, **REMAIN IN YOUR CAR.** Trained personnel will unload your vehicle.

Attention small businesses!

We are now able to accept wastes from Conditionally Exempt Small Quantity Generators (CESQG). Waste can only be accepted by appointment, at our facility or at the collection events.

How do you know if you are a CESQG? Contact the office **(616) 527-8219**, **erobins@ioniacounty.org**, or go online: **www.ioniacounty.org/resource-recovery** for help in determining your status and to learn what is required to participate.

CESQGs will be charged for disposal.

RESOURCE RECOVERY
 50 E. SPRAGUE RD.
 IONIA, MI 48846




2009

Household Hazardous Waste Collection Program




OPEN TO IONIA COUNTY RESIDENTS ONLY


April:	25	Ionia County HHW* Collection Facility, Ionia
May:	2	Portland Fire Department
	16	Belding: on M-44, Old Hospital Lot
June:	6	Saranac: Sheid Park* NW Parking Lot
Oct:	17	Ionia County HHW Collection Facility, Ionia

All collection events run from 8 am until noon

* Runs in conjunction with electronics collection

Have questions?
Contact the **Resource Recovery** office:

 **(616) 527-8219**

 **(616) 522-1449**

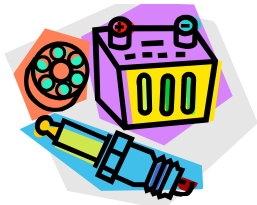
 **erobins@ioniacounty.org**

 **www.ioniacounty.org/resource-recovery**

Household Hazardous Waste Items Currently Accepted

From Your Home:

Dyes
Printer Cartridges
Aerosols
Dry & wet cell batteries
Dry cleaning agents
Household cleaners
Elemental mercury
All devices containing mercury
Small Electronics (cell phones, laptops,
(game consoles, cameras, etc.)



Pesticides:

(insecticides, herbicides, & rodenticides):
Insect, ant, rodent poisons, & repellents
Weed Killer
Pet spray, dip, & collars
Wood preservatives

From Your Hobbies:

Creosote
Cutting oil
Glues
Mineral Spirits
Naphtha
Rust remover
Turpentine
Fiberglass epoxy
Gun cleaning solvents
Paint brush cleaners
Polyurethane coatings
Wood stains & preservatives
Photographic chemicals
Artists' paints & mediums



Pool Chemicals:

Chlorine/Bromine tablets
Shock treatments & Water balancers

From Your Garage:

All automotive fluids, oils, solvents, cleaners,
and compressed gas cylinders
2 lbs. or less (e.g. propane)

Home improvement products:

Oil-based paint
Varnish, stain & paint thinner
Paint stripper
Caulk & adhesives
Fluorescent light bulbs



**THERE ARE MANY OTHERS!
JUST CALL (616) 527-8219 AND ASK!**

Waste NOT Accepted:

Tires
Explosives
Ammunition
Latex paint
Appliances
Computers
Medications
Radioactive waste (e.g. smoke detectors)
Propane tank over 2lbs.



**Contact our office to learn how to
dispose of these items.**

What can I do with my latex paint?

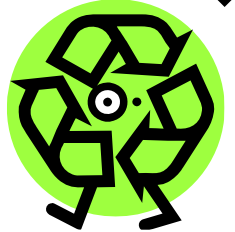
Latex paint can be easily
dried out and disposed of,
with the lid off, in your
regular trash. To aid the
drying process, mix in
scoopable kitty litter,
sawdust, or other absorbent material to help
soak up the excess liquid quickly.



Appointments available from mid-April
through mid-October, Wednesday & Friday
from 10-4. Facility closed for most items the
rest of the year. Please call our office or
check our web site for more information.

How can I help?

We rely on volunteers to
help conduct our special
collections. If you are
interested in volunteering or
would like more information,
please contact our office.



**Want to lend a hand but you don't have
the time?**

DONATE!

Disposal costs an average of \$51 per
participant or 45¢ per pound of waste.
Donations are accepted at the collections, are
tax-deductible, and are greatly appreciated.

You don't have to wait to recycle cell phones,
batteries (non-auto), and printer cartridges.
You can drop them off at these locations
during regular business hours. Call if you
need more information.

- ◆ MSU Extension Office
- ◆ County Courthouse
- ◆ Ionia Conservation District
- ◆ Ionia County Health Dept.*

*Only battery recycling at this location.

